



Direct Evolution Lite

Access to the very latest technical information is an essential element in the success of today's diesel related business



Delphi Diesel Aftermarket recognises this need and is committed to providing the Diesel Point customer with the tools required to quickly review vehicle application data and identify the required diesel products.

Diesel Point customers will need to access up-to-date technical information for customer service staff fielding customer enquiries, warehouses monitoring product inventories and purchasing departments placing orders. All require a source of reference for technical data on a daily basis. Direct Evolution Lite is the perfect solution for all of these departments.

» User Friendly Support

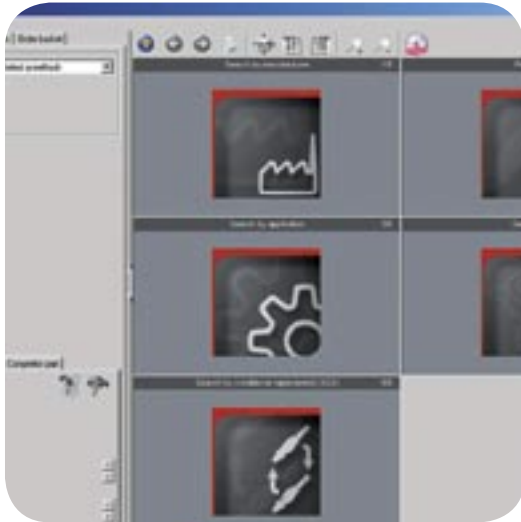
Direct Evolution Lite is a DVD based software package that presents the relevant technical sections in a user friendly internet style environment, offering quick navigation between screens. Direct Evolution Lite is ideal for quick reference on part number and application queries.

To ensure that customers have information relating to the latest applications, Delphi provides monthly updates for Direct Evolution Lite software. These updates guarantee that data relating to the very latest vehicle releases will be covered by Direct Evolution Lite.

» Features

- Parts lists for all Delphi technologies, from traditional mechanical products to the latest Common Rail & Electronic Unit Injector systems
- Exploded view diagrams of diesel fuelling systems
- Vehicle application information
- Cross referencing to vehicle manufacturer/competitor product
- Enhanced, faster search facility

Direct Evolution Lite



» Benefits

- Information is tailored for office/warehouse requirements
- Internet style, user friendly environment
- Multi-lingual capability – 5 languages on one DVD
- Split screen with drop down menu function
- Installation/licensing process via the internet
- Easy-to-use shopping basket facility
- Rapid response time

» Minimum System Requirements

The system requirements for both packages are:

An IBM-compatible PC with:

- Pentium 1Ghz, processor
- 256 MB memory
- 1 GB available on Hard Drive
- DVD drive
- XP Operating System
- Adobe Acrobat Version 6
- SVGA Colour Monitor working at 1024 x 768 resolution
- IBM PC-compatible keyboard & mouse

